

# GNAT Box Mobile VPN Client

**For Mobile and Remote Virtual Private Networks**



GNAT Box VPN Client provides the vital ability for remote users to initiate VPN communications with corporate resources. “Road Warriors” or telecommuters need to access mission critical networks and they do it across unsecured public networks or untrusted local networks. A VPN connection can also be used to connect end-users that need a secure “end-user to host” connection to transmit sensitive information over an intranet.

The GNAT Box VPN Client licenses the SafeNet, Inc. SafeNet/Soft-PK client technology, the most widely deployed IPsec-compliant, virtual private network (VPN) client. Thanks to this widespread deployment, SafeNet/Soft-PK is the defacto standard VPN remote access software. SafeNet/Soft-PK encryption technology is based on the latest industry-standard IPsec recommendations. It provides VPN capability to desktop and notebook computers running Microsoft® Windows® operating systems, enabling secure client-to-client or client-to-gateway communications over TCP/IP networks and dial-up connections. Your road warriors can telecommute as securely through an ISP or other dial-in remote access device as your desktop users can communicate across a private LAN or WAN.

The GNAT Box VPN Client uses the IPsec ESP tunnel mode to form a secure communications channel to a network secured by a GTA firewall. The GNAT Box VPN Client can also be used with IPsec gateways and firewalls, or another host running IPsec compatible VPN software, such as another computer running the GNAT Box VPN Client. Secure encrypted communications can be initiated in any IP environment, such as Ethernet LAN, DSL, or dial-up.

## Ease of Use

- GNAT Box VPN Client includes four modules: Security Policy Editor, Connection Monitor, Certificate Manager, and Log Viewer. Each of these have their own GUI to make it easy for you to configure your network and diagnose any connection problems.
- Security Policy Editor allows the administrator to configure security policies on a connection-by-connection basis and distribute locked down policies to end users.
- Connection Monitor displays statistical and diagnostic information for each connection.
- Certificate Manager facilitates the management of digital certificates with both online and manual enrollment.
- Log Viewer lists IKE negotiations as secure connections are established.

## Security Standards

- All relevant IPsec RFCs
- L2TP
- X.509 version 3 certificates
- Tunnel or transport mode security
- DES, 3DES, MD-5, and SHA-1 algorithms
- IP Payload Compression Protocol (IPCOMP)
- PKCS #7 Cryptographic Message Syntax Standard
- PKCS #10 Certification Request Syntax Standard
- PKCS #12 Personal Information Exchange Syntax Standard
- FIPS PUB 46-1 and 46-3, Data Encryption Standard
- FIPS PUB 140-1, Security Requirements for Cryptographic Modules
- FIPS PUB 180-1, Secure Hash Standard

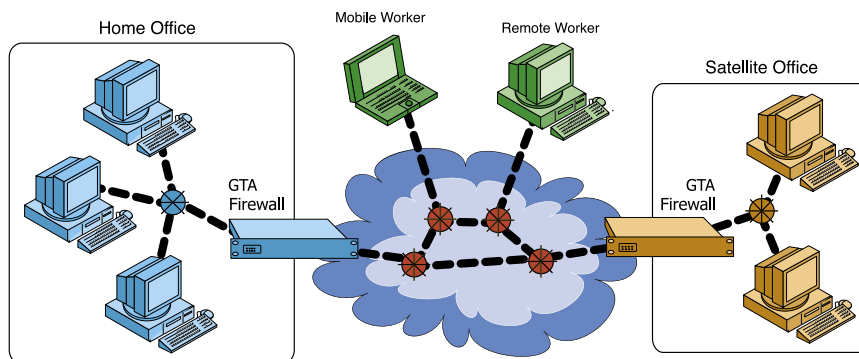
## Client System Requirements

- Computer system with a Pentium or equivalent processor
- Minimum RAM required:  
16MB - Windows 95, 98  
32MB - Windows NT Workstation  
64MB - Windows Me, 2000 Professional  
64MB - Windows XP
- 10 MB hard disk space
- Native Microsoft TCP/IP protocol
- Non-encrypting modem and native Microsoft PPP dialer for dial-up connections, or Ethernet for network connections
- Microsoft Internet Explorer 4 or later for viewing online help

\* GNAT Box Mobile VPN Client is available on Supported GTA Firewall Systems running GNAT Box System Software version 3.1.3 or higher.

## Interoperability

GNAT Box VPN Client transparently creates a VPN when operating on the Internet. With the client, you can connect securely with all IPsec compliant network products like routers, gateway encryptors, and firewalls. Multiple encryption and authentication algorithms are employed, including DES, 3DES, MD-5, and SHA-1. IKE is supported in main, quick, and aggressive modes. Additionally the GNAT Box VPN Client supports certificates for connectivity to third party firewalls and vpn devices that support them. Certificates from Microsoft, Netscape, Entrust, Verisign, and Baltimore Technologies are used with Simple Certificate Enrollment Protocol (SCEP). XAUTH (Extended Authentication Protocol) V.6 supports RSA SecurID® and RADIUS. Since the client works with Layer 2 Tunneling Protocol configured as dial-up networking, the VPN can be extended over non-IP protocols with both dial-up and Ethernet connections.



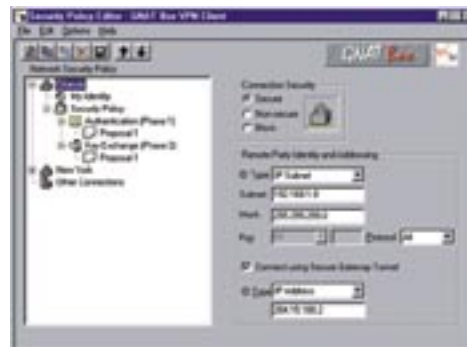
GNAT Box Mobile VPN Client in Practical Use

## Reliability

Network reliability is vital for secure connections and GNAT Box VPN Client provides redundant gateway capability and keepalives to address reliability issues. Internet Key Exchange (IKE) "keepalives" increase your network reliability by restarting IKE negotiations when the client detects stale security associations (SAs).

## VPN Features

- Configuration of security policies and management of digital certificates through a graphical user interface.
- Transfer digital certificates - both personal (with private key) and Certificate Authorities - between an office PC and home PC or laptop.
- Create and distribute customized installations for easy setup. These security policies can be locked to ensure network security.



## Part Numbers

ESVM00-0001-SN000	GNAT Box Mobile VPN, 1 Addl User License
ESVM00-0005-SN000	GNAT Box Mobile VPN, 5 Concurrent User License
ESVM00-0010-SN000	GNAT Box Mobile VPN, 10 Concurrent User License
ESVM00-0050-SN000	GNAT Box Mobile VPN, 50 Concurrent User License
ESVM00-0100-SN000	GNAT Box Mobile VPN, 100 Concurrent User License



3505 Lake Lynda Drive, Suite 109 • Orlando, Florida 32817 USA

Tel: +1.407.380.0220  
Email: info@gta.com

Fax: +1.407.380.6080  
Web: www.gta.com